



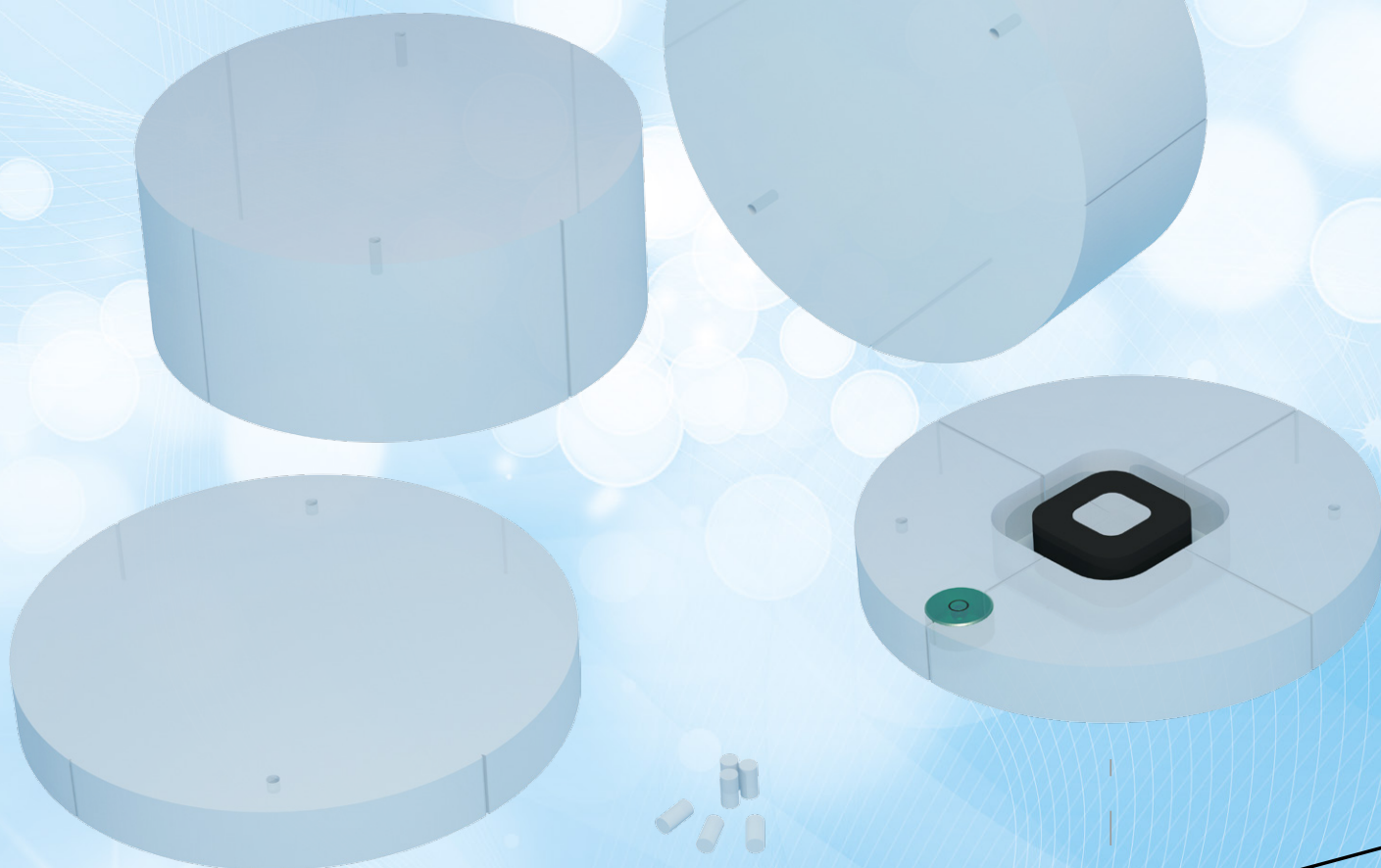
This product is available through:

JRT Associates

800-221-0111

**UNMATCHED
SOLUTIONS
FOR QUALITY
CONTROL**

Pro-Dent CT 161

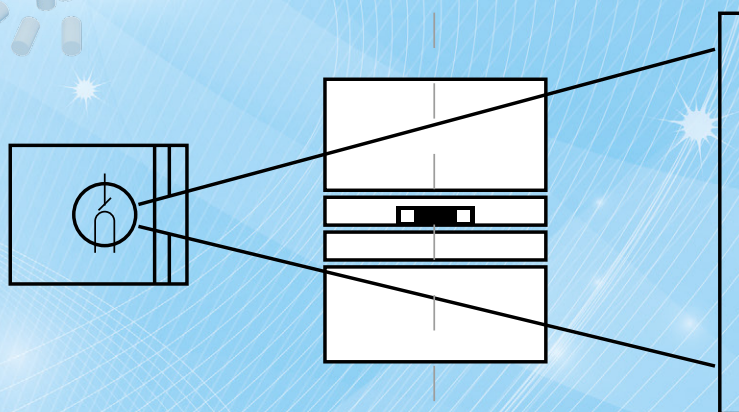


Phantom for acceptance and constancy testing of **3D function of dental Cone-Beam CT, Dental Volume Tomography (DVT) and 3D imaging devices** according to **DIN 6868-161** and **QS-RL**.

Technical data

(can be modified to customer specifications):

- diameter: 160 mm
- 20 mm thick main module containing:
 - test object containing equivalents of air, soft tissue and bone
 - positioning markers
 - bubble level
- 20 mm, 50 mm and 60 mm thick PMMA modules with positioning aids
- test stand with a table for placing the phantom in the test position
- folding base for test stand positioning on the X-ray unit's chair
- convenient, portable case for storing and transporting the phantom



Product features:

- Complies with:
 - DIN 6868-161
 - QS-RL
- CE certified
- the Manual provides detailed guidelines for carrying out each test, results assessment and registration

